



South St. Clair County - WAKE ZONE - UNDER 26 FT
Based on the "Length of Boat" Applies to the St. Clair River system from the Black River in Port Huron to Lake St. Clair in Clay twp..

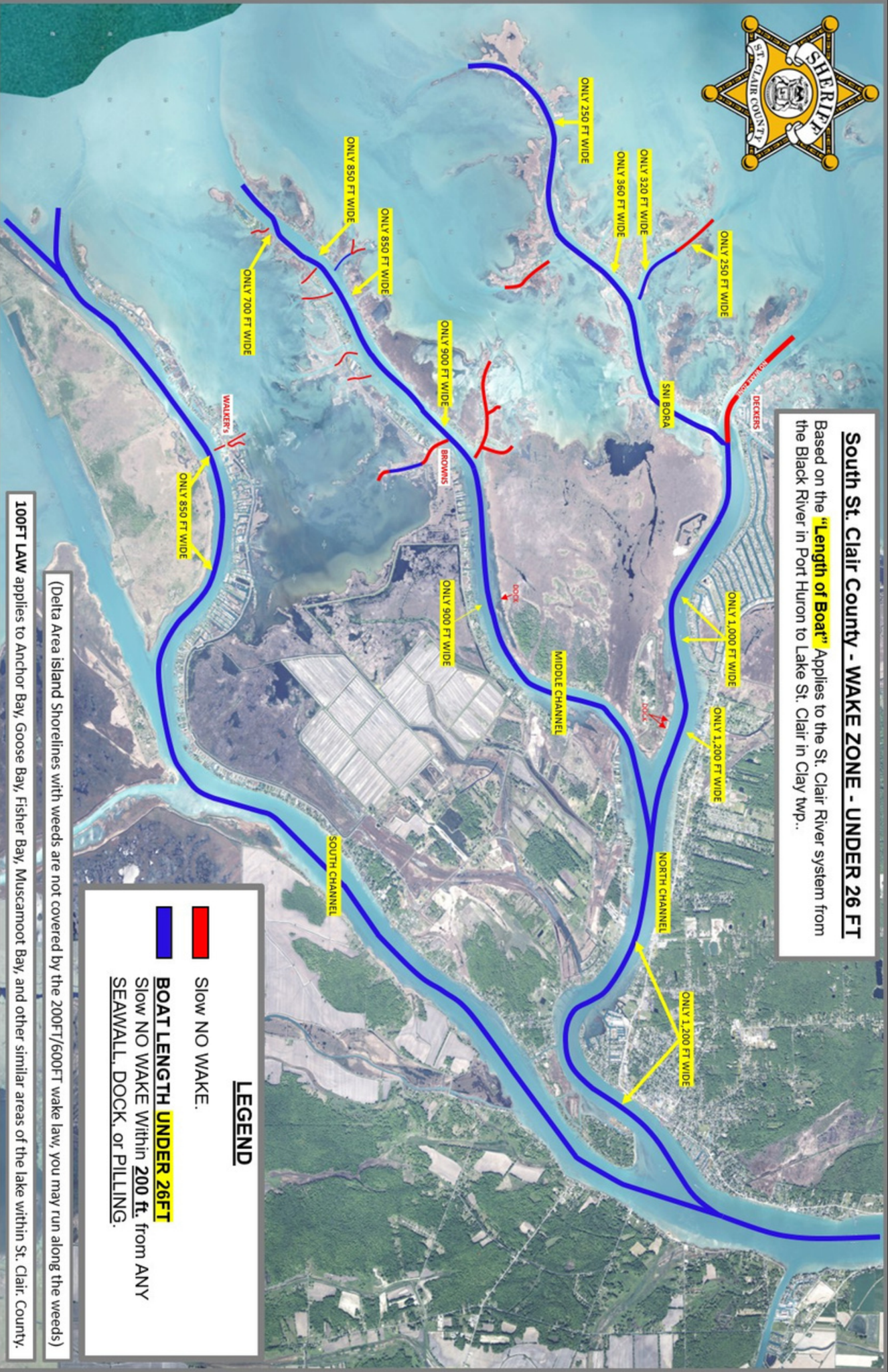
LEGEND

 Slow NO WAKE.

 **BOAT LENGTH UNDER 26FT**
Slow NO WAKE within 200 ft. from ANY SEAWALL, DOCK, or PILLING.

(Delta Area Island Shorelines with weeds are not covered by the 200FT/600FT wake law, you may run along the weeds)

100FT LAW applies to Anchor Bay, Goose Bay, Fisher Bay, Muscamoot Bay, and other similar areas of the lake within St. Clair County.





Based on the **"Length of Boat"** Applies to the St. Clair River system from the Black River in Port Huron to Lake St. Clair in Clay twp..

ONLY 250 FT WIDE

SNI BORA

ONLY 360 FT WIDE

ONLY 250 FT WIDE

ONLY 900 FT WIDE

ONLY 900 FT WIDE

BROWNS

ONLY 850 FT WIDE

ONLY 850 FT WIDE

ONLY 700 FT WIDE

WALKER'S

ONLY 850 FT WIDE

ONLY 850 FT WIDE

ONLY 1,000 FT WIDE

ONLY 1,200 FT WIDE

NORTH CHANNEL

ONLY 1,200 FT WIDE

MIDDLE CHANNEL

SOUTH CHANNEL

SLOW NO WAKE.



BOAT LENGTH 26FT & LONGER
Slow NO WAKE Within 600 ft. from ANY
SEAWALL, DOCK, or PILLING.

(Delta Area island Shorelines with weeds are not covered by the 200FT/600FT wake law, you may run along the weeds)

100FT LAW applies to Anchor Bay, Goose Bay, Fisher Bay, Muscamoot Bay, and other similar areas of the lake within St. Clair County.



CANAL NO WAKE ALL VESSELS

NO WAKE ALL VESSELS

NO WAKE ALL VESSELS

NO WAKE ALL VESSELS

LAKE HURON

Port Huron Area No Wake Zone

LEGEND

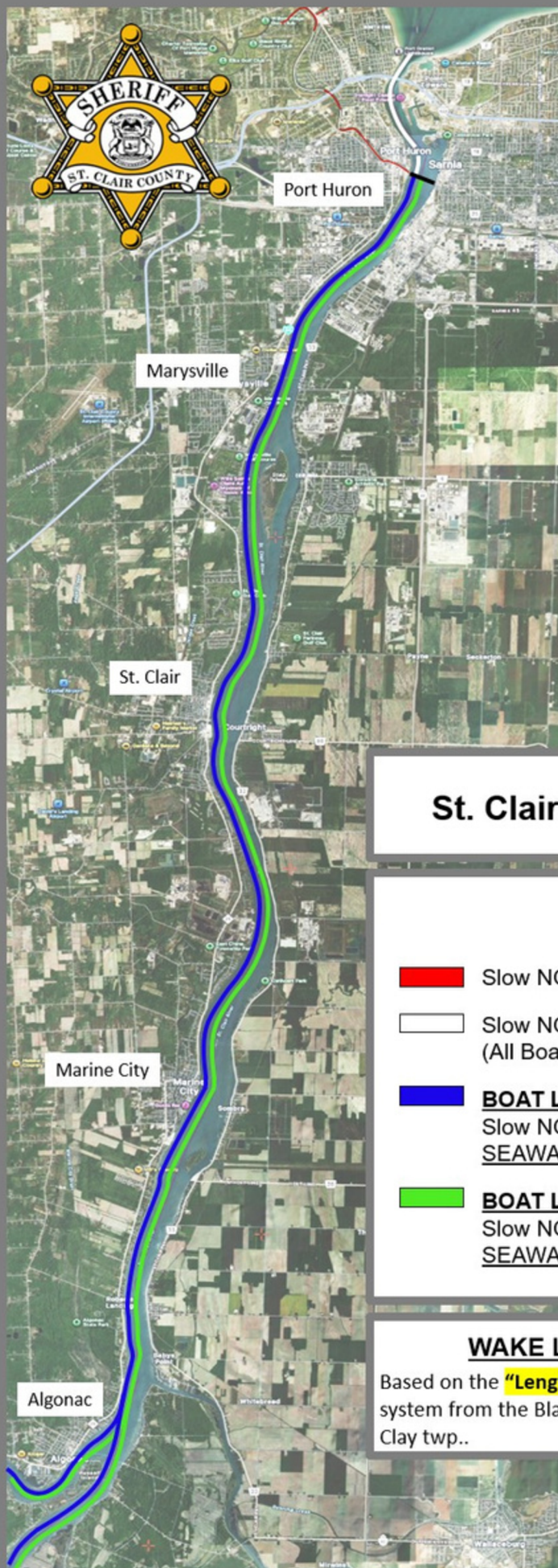
- Slow NO WAKE (All Boats)
- Slow NO WAKE Within **100 ft.** from shoreline. (All Boats)
- BOAT LENGTH UNDER 26FT**
Slow NO WAKE Within **200 ft.** from ANY SEAWALL, DOCK, or PILLING.
- BOAT LENGTH 26FT & LONGER**
Slow NO WAKE Within **600 ft.** from ANY SEAWALL, DOCK, or PILLING.

WAKE LAWS of the St. Clair River

Based on the "**Length of Boat**" Applies to the St. Clair River system from the Black River in Port Huron to Lake St. Clair in Clay twp..





BLACK RIVER

ST. CLAIR RIVER



St. Clair River – WAKE ZONE

LEGEND

-  Slow NO WAKE (All Boats)
-  Slow NO WAKE Within **100 ft.** from shoreline. (All Boats)
-  **BOAT LENGTH UNDER 26FT**
Slow NO WAKE Within **200 ft.** from ANY SEAWALL, DOCK, or PILLING.
-  **BOAT LENGTH 26FT & LONGER**
Slow NO WAKE Within **600 ft.** from ANY SEAWALL, DOCK, or PILLING.

WAKE LAWS of the St. Clair River

Based on the **"Length of Boat"** Applies to the St. Clair River system from the Black River in Port Huron to Lake St. Clair in Clay twp..