

Wadhams to Avoca Trail History

The Port Huron and Northwestern Railroad Company opened the narrow gauge railroad from Port Huron to East Saginaw in 1882. In 1889, the railroad was sold to the Pere Marquette Railroad and the tracks were changed to standard gauge. The St. Clair County Parks and Recreation Commission purchased the right of way from the CSX Railroad in 1999.

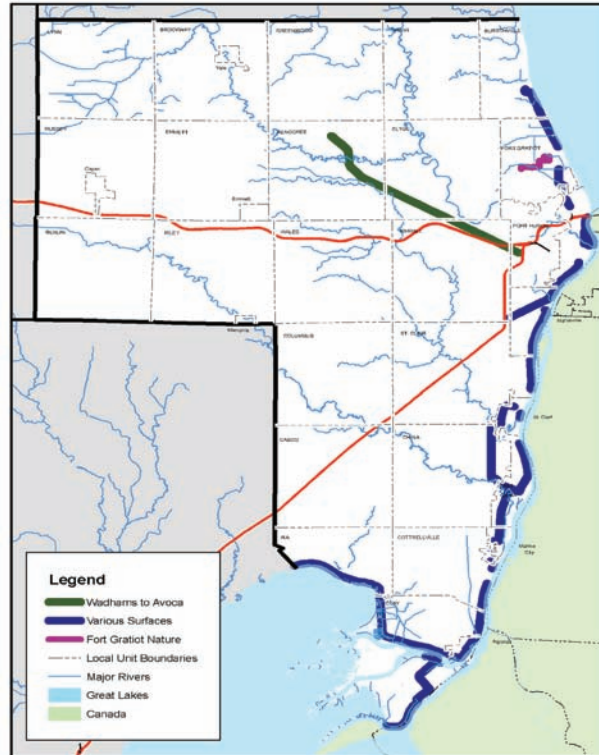
P. M. R. R. BRIDGE, 1-2 MILE SOUTH OF AVOCA, MICH.



This picture, showing a passenger train crossing the Mill Creek Trestle, was published on a post card around 1900.

Trail System Information

The St. Clair County Parks and Recreation Commission is also working with shoreline communities to develop the 54 mile Bridge to Bay Trail. For more information on St. Clair County's Trail System visit www.stclaircountytails.org



County Parks Info

St. Clair County has opportunities for all your recreational needs. Along with the trail system, St. Clair County has two beautiful parks for you to enjoy; Goodells County Park and Ft. Gratiot County Park. For more information about County Parks, or for a large print version of this brochure, please call 810-989-6960.

St. Clair County Parks and Recreation Commission



200 Grand River Avenue,
Suite 205 Port Huron, MI 48060
810/989-6960
www.stclaircountyparks.org
www.stclaircountytails.org



Trail Funding

Funding for the construction of Wadhams To Avoca Trail sections comes from the St. Clair County Parks and Recreation millage and grants. Grant funds for the trail have been provided by the United States Government through the Transportation Equity Act for the Twenty-first Century (TEA-21) program administered by the Michigan Department of Transportation (MDOT); the Michigan Natural Resources Trust Fund administered by the Michigan Department of Natural Resources (MDNR); and the GreenWays Initiative program administered by the Community Foundation of Southeastern Michigan.



Printed 2009 80160177

Wadhams to Avoca Trail

St. Clair County, Michigan



Follow the Path of
St. Clair County History!
www.wadhamstoavocatrail.org

When you visit the trail....

- The Wadhams to Avoca Trail is a non-motorized trail open year round.
- The trail is 10 feet wide, and over 12 miles in length. Over 5 miles of the trail are paved, starting at Griswold Rd. and ending at McLain Rd. The remainder of the trail (70 miles), between Avoca Rd. and McLain Rd. is surfaced with limestone fines.
- St. Clair County Parks is currently working with MDOT and the Road Commission to determine the safest way to cross Wadhams Rd. Trail users should use extreme caution when crossing Wadhams Rd.
- Mileage markers and road crossing signs are installed along the trail's entire length. Markers designate each 1/2 mile from the middle of the Mill Creek Trestle.
- The 640ft Mill Creek Trestle is the showpiece of the Wadhams to Avoca Trail. Built in the Late 1800's, the 60 ft. high trestle has been decked and railed to provide safe access for trail users. Four overlooks provide spectacular views perfect for photo opportunities. The trestle is located between Beard Rd. and Imlay City Rd.
- Horses are not allowed on the trestle.
- Share the trail - cyclists yield to all other trail users, and walkers yield to equestrians.
- Slower traffic should keep to the right of the trail; faster users pass on the left. Before passing other trail users, provide adequate warning and reduce speed.
- For safety, bottled water and cell phones should be carried at all times. Don't litter, carry out what you carry on to the trail.
- State and local ordinances require owners to keep their pets on a leash while on the trail. Please clean up after your pet.
- Please respect adjacent private property.
- Hunting and firearms are not allowed on the trail.
- Parking lots and vault toilets are provided at the Lapeer Rd, Imlay City Rd. and Avoca Rd. trail heads. Additional parking is available at the Wadhams Road trail head provided by the By-Lo gas station. We ask trail users not to park at the road crossings.

